

# Vision inspection system *PackSecure*

## *100% Seal Integrity*

*Objective evaluation  
and 100% control*

*Full traceability*

*Easy cleaning*

*Industrial software  
**BRAIN2***

*Numerous inspection  
options*



# Seal Integrity...

## MEET TWO KEY CRITERIAS WITH JUST ONE VISION INSPECTION SYSTEM FOR AN OPTIMAL PRODUCT QUALITY

Meet two key criteria with just one vision inspection system for an optimal product quality: an undamaged seal and correct labeling. PackSecure fulfills both functions. Simultaneously, efficiently and reliably. It completely checks each product side for any damaged seals, incorrect labels or information. Packages which do not meet the defined criteria are automatically rejected. This 100% inspection supports, among other things, manufacturers of sterilized products. The constant inspection with PackSecure fulfills the Critical Control Points (CCP). Packages with leaking or soiled seals are immediately detected and rejected. A follow-up inspection of the entire batch is not necessary and the rejection volume is reduced. Ideal for a positive return. Your benefits with regard to the consumer: only products in best possible quality reach the market. Food-grade and with the correct product information on the label. This is possible by means of integrated cameras and sensors which work more reliably than the human eye: they check the markings on the label (printed characters, shelf life, stickers, barcodes etc.) and whether the seal of variable packages is intact. For complete tracking, these images will be archived together with production data via software.

### Objective evaluation

#### & 100% control

- Excludes subjective operator evaluations
- Constant product quality 24/7

### Industrial software BRAIN2

- Easy and automated reporting, data evaluation and analysis
- Optimized OEE due to evaluation of relevant key figures
- Reduced downtimes due to back up function

### Full traceability

- Archived images for transparent processes
- Effective limiting of discrepancies concerning batches, lots, shifts etc.
- Helps reduce amount of loss

### Easy cleaning

- Hygienic design
- IP65, optionally IP66
- Hermetically sealed housing

### Flexible integration

- Stand-alone device for end-of-line control
- Integrated solution for thermoformers or packaging machines as well as price labeling systems

### Numerous inspection options

- Touchless, visual inspection of the seal for contaminations: material and foreign body inclusions as well as air pockets
- Ensures optimal, CCP-conform product seals
- Ensures compliance with shelf life
- Avoids missing, wrong, incorrectly positioned or incorrect labels.
- Optical character recognition (OCR): reads and recognizes texts, codes etc.
- Checks whether all information meets the requirements.



## DIGITAL control

With our intelligent industrial software BRAIN2 you gain maximum transparency and complete traceability along your supply chain. Matching your needs the software modules can be easily integrated in your company processes via interfaces. They record production data in real time, manage and analyze data efficiently or safely control production processes. Automatically create reports and statistics. Save pictures including date and time for the duration of a product's shelf life. This is one of many options in order to document your production



### BRAIN2 OEE - Transparent numbers

BRAIN2 OEE records key metrics of your production, evaluates them and calculates the OEE value from the collected data records. The ideal basis for optimization processes.



### BRAIN2 Data\_Maintenance Central master data management

Centrally manage master and configuration data such as PLU and customer data on your Bizerba devices using this app and with minimal time effort



### BRAIN2 Capture Perfect data flow

With the BRAIN2 Capture app you record and evaluate among other things the process data of your Bizerba inspection systems in a quick, easy and efficient manner.



### BRAIN2 Safety\_Service Backed up data

Automatically create backups via app. Data centrally saved to the BRAIN2 database can be easily restored via GUI or directly on the device. For a fast start-up you can simply clone device data



## HIGHLIGHTS of the PackSecure

- Complete **optical check** of packages: simultaneous checking of seal and labeling
- Prevents** incorrectly labeled and **leaking** packages in retail
- Automatic rejection** of packages not conforming with reference criteria
- Modular design to allow integration of a **broad spectrum of sensors** that match inspection requirements
- Suitable for packaging lines with **automatic product change**
- Suitable for **many packaging types**: thermo-formed or top sealed trays and flow packs with transparent, partly colored or printed seal
- Upgradeable** for future requirements
- Hygienic design and **time-saving** cleaning
- Software for **complete tracking** of all products: saving of images incl. date and time, counter, production and machine logbook
- Safe and easy operation: **intuitive user interface** with color touch screen
- Can be **easily integrated** in existing production lines

## complete END OF LINE SOLUTIONS

*LabelSecure: Vision inspection system*



*XRE-D: X-ray inspection system*



*VARICON+: Metal detector*



*ClassCheck: Vision inspection system*

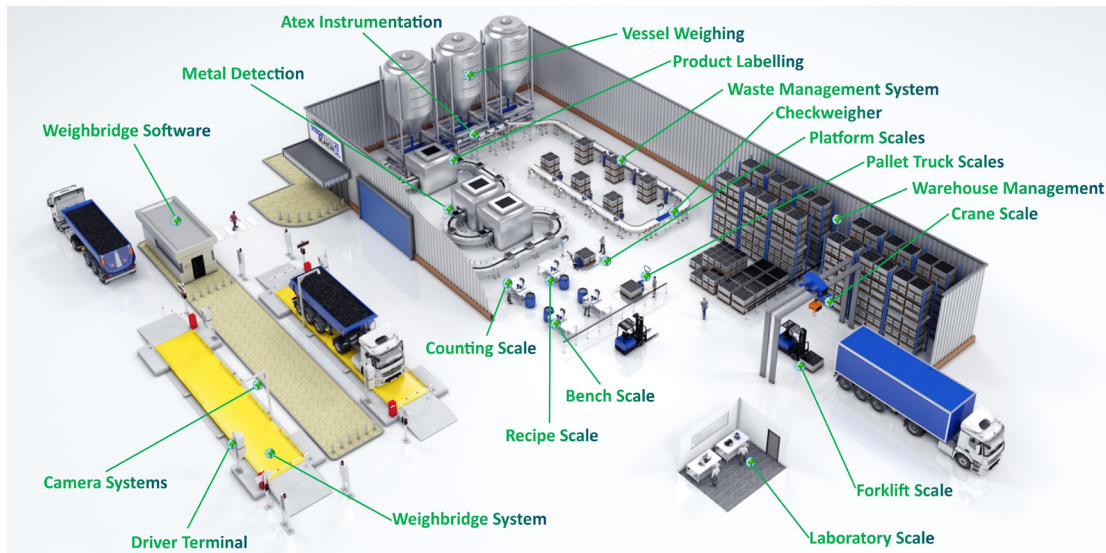


*GLS/INTUITY: Metal detection coils*



for more information visit [www.globeweigh.com](http://www.globeweigh.com)





## GlobeWeigh providing TOTAL SOLUTIONS

FROM WEIGH PRICE LABELLERS TO WEIGHBRIDGES TO BENCH SCALES

Globeweigh's skilled engineers are trained to support a diverse range of weighing equipment from laboratory balances through to weighbridges. Our core philosophy is based on identifying and remedying any potential problems ahead of time, thereby optimising your equipment 'uptime'. Contact us to find out more about service and support programs for automatic and

non-automatic weighing equipment and instrumentation including:

**Weighbridges, Bench scales, Floor scales, Counting scales, Weigh price labellers, Pallet truck scales, Forklift truck scales, Crane scales, Laboratory scales, Hopper scales, Tank & silo weighing systems, Mechanical scales, Axle weighers and Check weighers.**

## Comprehensive Service & Support

### KEEPING YOUR CRITICAL WEIGHING EQUIPMENT IN TIP-TOP CONDITION

We appreciate and understand the importance of a well defined and implemented service and maintenance program. Your equipment and installation have their own specific requirements and will only perform as well as the maintenance program you have in place. Our support packages are designed to suit your exact needs, giving you time to focus on the efficient running of your business, without having to worry about breakdowns. Service visits are arranged to suit your company's working pattern and we can fit in with scheduled shutdowns or plan visits during evenings and week-ends. If your equipment is used more extensively at certain times of the year

due to seasonal influences, we will assess this and provide a plan that is just right for your business.

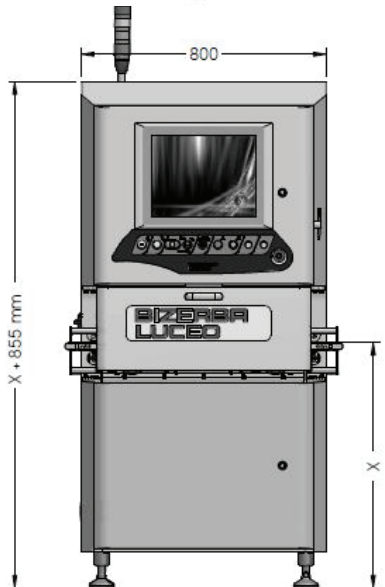
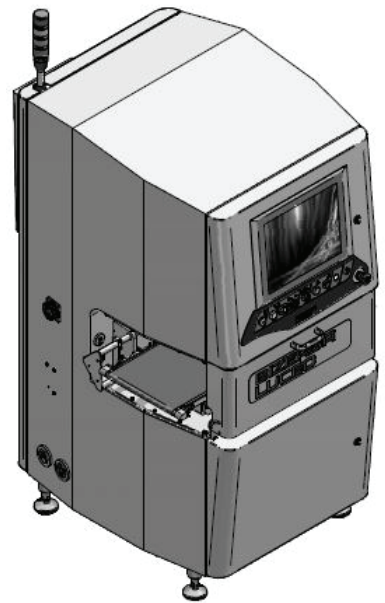
### SERVICE AND SUPPORT – WHEN AND WHERE YOU NEED IT!

Globeweigh offers a comprehensive service, calibration and support capability for a wide range of industrial weighing equipment throughout Ireland. We support both our own and other manufacturers' weighing equipment, and packages can be tailored to meet your specific operational and fiscal requirements. **Service is available from our centres in Armagh and Cork, with 24 hour cover also available for companies operating around the clock and at weekends.**

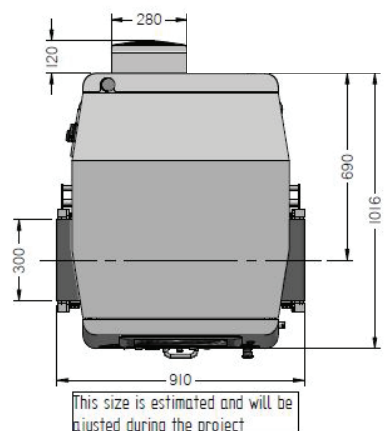
- 🌐 Coverage for public & bank holidays
- 🌐 Priority four hour response time

- 🌐 Coverage for week-ends
- 🌐 24 hour telephone support

## Dimensional Drawings



Height conveyor (O) :  
From 785 to 885 mm ( STANDARD )  
From 885 to 1115 mm ( OPTIONAL )



NSAI Authorised  
Verifiers



Directive  
2014/31/32



ISO 9001:2015  
Quality



ISO 45001:2018  
Health & Safety



ISO 14001:2015  
Environmental

**ARMAGH OFFICE:** 118 Portadown Road, Mullavilly,  
Co. Armagh BT62 2JX **CALL:** 028 38840714

**CORK OFFICE:** Unit 3, Airport East Business & Technology  
Park, Farmer's Cross, Cork **CALL:** 021 4318388



[www.globeweigh.com](http://www.globeweigh.com) | [sales@globeweigh.com](mailto:sales@globeweigh.com)

