

PORTION CONTROL

SYSTEM

KEY FEATURES:

- Reduce Product Giveaway
- Operator Performance Monitoring
- Wall Mounted Display
- 6 Month Pay Back
- Up to 16 Terminals Per System
- Traffic Light System
- Password Protected
- All Scales Networked
- Operator Friendly



Armagh Office:
118 Portadown Road, Mullavilly,
Co. Armagh BT62 2JX
Call: 028 38840714

Cork Office:
Unit 3, Airport East Business & Technology Park,
Farmer's Cross, Cork
Call: 021 4318388

PORTION CONTROL SYSTEM TO IMPROVE OPERATOR

1

Stephen McMorris

Time Logged On: 00:02:05
Packs/Min: 2.9 Total Packs: 6

Logoff

2

John Adair

Time Logged On: 00:01:45
Packs/Min: 64.0 Total Packs: 112

Logoff

3

Andrew McCann

Time Logged On: 00:00:23
Packs/Min: 5.2 Total Packs: 2

Logoff

4

Neil Hobson

Time Logged On: 00:01:31
Packs/Min: 3.3 Total Packs: 5

Logoff

5

Simon Maxwell

Time Logged On: 00:00:18
Packs/Min: 10.0 Total Packs: 3

Logoff

6

Ryan Hassett

Time Logged On: 00:00:15
Packs/Min: 12.0 Total Packs: 3

Logoff

Product Details

Product: M&S Chargrill Cunky
Lower Limit: 115g Tare: 11g
Upper Limit: 215g Nominal Weight: 120g

Batch Summary

Time Elapsed: 00:02:36 Total Weight: 21.58Kg
Total Packs: 131 Avg. Weight: 165g
Packs/Min: 50.38 Avg. Giveaway: 45g (37.3%)

Operator	Scale	Giveaway	Weight	Date/Time
Ryan Hassett	6	71	191	20/01/2017 12:43
Ryan Hassett	6	8	128	20/01/2017 12:43
Ryan Hassett	6	2	122	20/01/2017 12:42
Simon Maxwell	5	-3	117	20/01/2017 12:42
Simon Maxwell	5	27	147	20/01/2017 12:42
Simon Maxwell	5	59	179	20/01/2017 12:42
Neil Hobson	4	33	153	20/01/2017 12:42
Neil Hobson	4	48	168	20/01/2017 12:42
Andrew McCann	3	23	143	20/01/2017 12:42
Andrew McCann	3	-2	118	20/01/2017 12:42
Neil Hobson	1	88	208	19/01/2017 10:21
Neil Hobson	1	9	129	19/01/2017 10:21
Stephen McMorris	3	92	212	19/01/2017 10:10
Stephen McMorris	3	2	122	19/01/2017 10:10
Stephen McMorris	3	17	137	19/01/2017 10:10

Override Limits

Break Mode

Batch ID: 3082		
2 John Adair	Time Logged On: 00:10:27	Packs / Min: 1.6
5 Simon Maxwell	Time Logged On: 00:09:54	Packs / Min: 0.5
3 Stephen McMorris	Time Logged On: 00:10:22	Packs / Min: 0.1
1 Neil Hobson	Time Logged On: 00:10:33	Packs / Min: 0.0
4 Andrew McCann	Time Logged On: 00:10:15	Packs / Min: 0.0
6 Joe Bloggs	Time Logged On: 00:06:19	Packs / Min: 0.0
7 Ryan Hassett	Time Logged On: 00:06:17	Packs / Min: 0.0
8 neil mccann	Time Logged On: 00:06:15	Packs / Min: 0.0
9 will calvert	Time Logged On: 00:06:13	Packs / Min: 0.0
10 lee maguire	Time Logged On: 00:06:06	Packs / Min: 0.0

Operators				
Scale	Operator	Time Logged On	No Of Packs	Packs Per Min
4	Wiesia W	00:00:58	8	8.2
3	Katrina S	00:00:59	3	3.0
1	Edita V	00:01:03	1	0.9
2	Ausra M	00:01:01	1	0.9
5	Monika P	00:02:51	0	0
6	Gintare J	00:00:55	0	0
7	Dovile K	00:00:53	0	0
8	Lilija D	00:00:51	0	0
9	Riina R	00:00:50	0	0
10	Sofia F	00:00:48	0	0

CENTRAL DATABASE

All the product parameters will be centrally held with password protection for uploading into the scales to avoid unauthorised changes. This will include the target weights and the anticipated throughput in packs per minute. This is also where operators are set up and are then selected by the supervisor and allocated to a work station.

OPERATOR MONITORING

Against each product there is a target throughput in packs per minute. This is the benchmark that the operators will be measured against. On the operator performance display which can be either wall mounted or simply available in a managers office, a colour coded matrix is available. This colour coding will show in order from the top to the bottom who is performing best amongst the operators. It will also show either a red or green icon to highlight if an operator is performing inside the tolerance or is under performing. To ensure a fairness for performance there is a pause button for each operator if they have to leave their station to perform other duties.

REPORTING

The main reports are going to be product and operator performance.

Operator performance is available per batch, day or week. This allows the opportunity to see if there is a poor performing operator that needs retrained.

Product performance will detail the giveaway per product batch. If a target of say 2% is determined as an acceptable giveaway then each batch can be benchmarked against this. After a batch is started the performance can be monitored in real time and a temporary adjustment can be made to improve the level of giveaway. At all times there would be a parallel monitoring against average weight compliance.

PERFORMANCE AND MINIMISE GIVEAWAY

Globeweigh Manager	Products / Administrator		
Quality Assurance	Batches	Products	Operators
Packing Planner	Operator Performance		
Reference Data	Date From: 0		
Products	Operator Name	Portion Count	Total Time
Portion Control	Ausra M	1575	24:58:42
	Daiva B	433	06:30:33
	Dovile K	639	06:42:54
	Edita V	2679	45:59:54
	Gintare J	1499	55:50:21
	Katrina S	737	34:34:40
	Kristina V	7201	68:10:11

LINE SET UP

The floor supervisor or manager can allocate operators to a location, when this is done the product that is being weighed is selected from a drop down list. This then populates each of the scales with the parameters for that product. This includes the net weight, tare, upper tolerance and projected throughput in packs per minute. This is instantaneous to all stations and is ready for live weighing. The operator is on live time unless the supervisor pauses the operator in a case where they are assigned to a new task. The operator performance is based on the time they were assigned to the line.



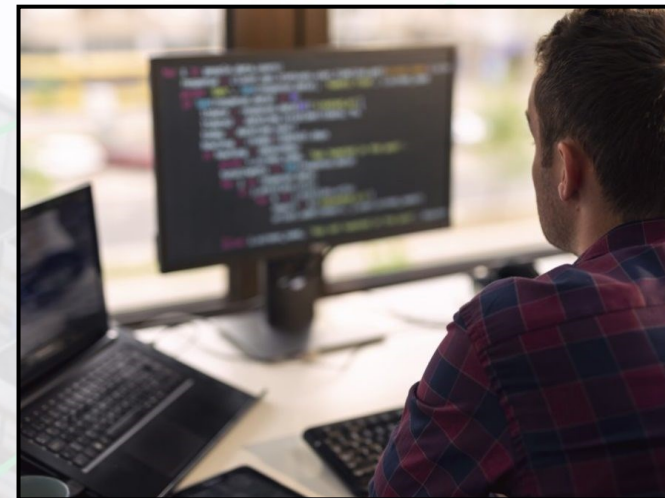
WEIGHING

Globe partner with Europe's leading scale manufacturers to ensure high quality scales are used for our projects. Accuracy is required to ensure correct weighing along with the scales being robust and suitable for the environment they are installed in.

The instrumentation that we use is manufactured in Germany by Bizerba. This unit is trade approved and is IP69K ingress protected.

The scales are designed for fast operation so that when an accepted pack is identified by the green traffic light it is instantly recorded to the system avoiding slowing operators down.

For speed of operation the traffic light system has proven to be significantly faster than an operator reading a weight.



IN HOUSE TEAM

GlobeWeigh have a team of both in house software developer's and hardware engineer's. Our team is lead by a team with a combined experience of over 100 years in software and hardware giving you confidence that we will deliver a turn key package tailored to your requirements.

Based in both Mullavilly, Co. Armagh and Farmer's Cross, Cork we have engineers strategically placed across the country to provide with software support supported via online portals.

Globeweigh provide annual calibrations and trade approved verifications.

OUR SERVICES

Comprehensive service and support – when and where you need it!

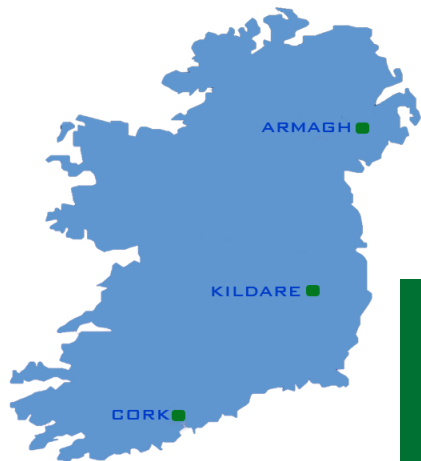
Globeweigh offers a comprehensive service, calibration and support capability for a wide range of industrial weighing equipment throughout Ireland. We support both our own and other manufacturers' weighing equipment, and packages can be tailored to meet your specific operational and fiscal requirements.

Service is available from our centres in Armagh, Kildare and Cork, with 24 hour cover also available for companies operating around the clock and at weekends.

KEEPING YOUR CRITICAL WEIGHING EQUIPMENT IN TIP-TOP CONDITION

We appreciate and understand the importance of a well defined and implemented service and maintenance program. Your equipment and installation have their own specific requirements and will only perform as well as the maintenance program you have in place. Our support packages are designed to suit your exact needs, giving you time to focus on the efficient running of your business, without having to worry about breakdowns.

Service visits are arranged to suit your company's working pattern and we can fit in with scheduled shutdowns or plan visits during evenings and week-ends. If your equipment is used more extensively at certain times of the year due to seasonal influences, we will assess this and provide a plan that is just right for your business.



- Coverage for all public and bank holidays
- Coverage for week-ends
- Priority four hour response time
- 24 hour telephone support

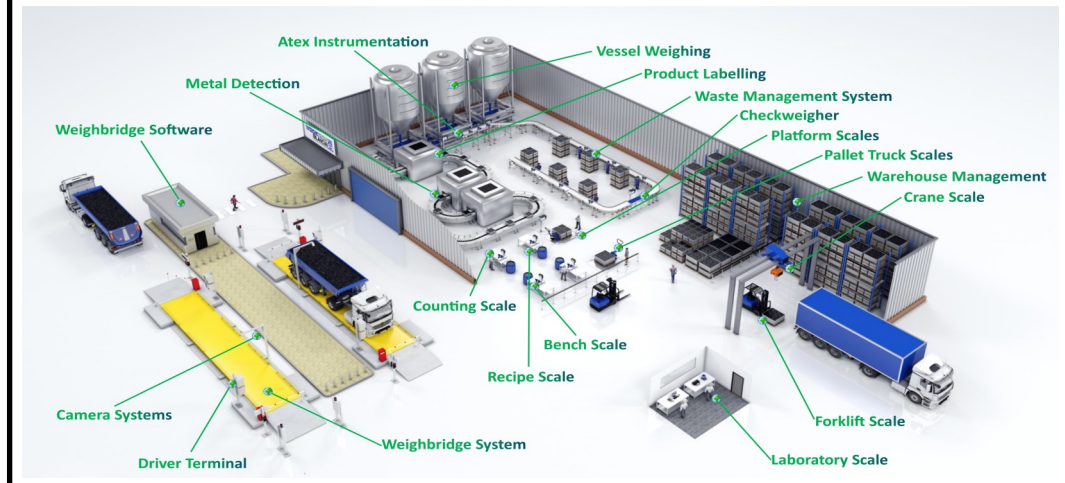
**24/7
SERVICE**

TOTAL SOLUTIONS

FROM WEIGH PRICE LABELLERS TO WEIGHBRIDGES TO BENCH SCALES

Globeweigh's skilled engineers are trained to support a diverse range of weighing equipment from laboratory balances through to weighbridges. Our core philosophy is based on identifying and remedying any potential problems ahead of time, thereby optimising your equipment 'uptime'. Contact us to find out more about service and support programs for automatic and non-automatic weighing equipment and instrumentation including:

Weighbridges, Bench scales, Floor scales, Counting scales, Weigh price labellers, Pallet truck scales, Forklift truck scales, Crane scales, Laboratory scales, Hopper scales, Tank & silo weighing systems, Mechanical scales, Axle weighers and Check weighers.



ISO 9001:2015 Quality



ISO 45001:2018 Health & Safety



ISO 14001:2015 Environmental



NSAI Authorised Verifiers



Directive 2014/31/32

We are certified for the self verification (SV) of NAWI's (non-automatic weighing instruments) and MID (automatic weighing instruments)

WWW.GLOBEWEIGH.COM

Armagh: 028 38840714
Cork: 021 4318388

sales@globeweigh.com