

## INTAKE CONTROL

## SYSTEM

### KEY FEATURES:

- Growing yield (Yield per acre)
- Processing Yield
- Traceability
- Production Planning
- Ingredient Stock Control
- Finished Good Stocks
- Finished Goods Costings



### Armagh Office:

118 Portadown Road, Mullavilly,  
Co. Armagh BT62 2JX  
Call: 028 38840714

### Cork Office:

Unit 3, Airport East Business & Technology Park,  
Farmer's Cross, Cork  
Call: 021 4318388



# INTAKE CONTROL SYSTEM FOR YIELD, TRACEABILITY,



## TRACEABILITY

Each box processed will be identified against a batch and traceable back to the source. As ingredient stock is booked into a production batch the box labels will be scanned to identify and quantify what is being inputted for production. Each production batch will be identified and all the finished product will be labelled with a batch code and barcode. For traceability purposes all batch numbers will be unique. At any stage a batch code can be entered and all the source of that batch as well as the end users can be identified.

Batch ID: 3082		
2	John Adair	Time Logged On: 00:10:27 Packs / Min: 1.6
5	Simon Maxwell	Time Logged On: 00:09:54 Packs / Min: 0.5
3	Stephen McMorris	Time Logged On: 00:10:22 Packs / Min: 0.1
1	Neil Hobson	Time Logged On: 00:10:33 Packs / Min: 0.0
4	Andrew McCann	Time Logged On: 00:10:15 Packs / Min: 0.0
6	Joe Bloggs	Time Logged On: 00:06:19 Packs / Min: 0.0
7	Ryan Hassett	Time Logged On: 00:06:17 Packs / Min: 0.0
8	neil mccann	Time Logged On: 00:06:15 Packs / Min: 0.0
9	will calvert	Time Logged On: 00:06:13 Packs / Min: 0.0
10	lee maguire	Time Logged On: 00:06:06 Packs / Min: 0.0

## YIELD

### GROWING YIELD

At intake there is an opportunity to log all the product against a grower and potentially field number. Based on field size this will provide a growing yield which will allow the grower to benchmark his harvest against previous years or industry expectations.

Batch Details	
Batch Code:	22/9/20
Product:	Whitepudding Chubbs
Production Date:	27/02/2020
Casing Batch No:	K20890036
Clips Batch No:	
String Batch No:	
Flow Wrap Batch No:	
Vac Bags Batch No:	

Source (Raw Materials In)	
Raw Material	Weight (kg)
Pork Loin Meat	250.00
Corned Beef	50.00
Pork Cut Fat	120.00
Porkhead Oxtail	250.00
Whole Peeler Onions	240.00

Supplier Batch Code	Supplier Name
25113680211232	Dawn Pork and Bacon
023796	All in All Ingredients
25126410601541	Dawn Pork and Bacon
2021	Fishmans
794	West Cork Veg Solutions

Destination	
Order Type	Dispatch Order
OPERA	11509
OPERA	11518
OPERA	11503
OPERA	11488
OPERA	11512
OPERA	11533

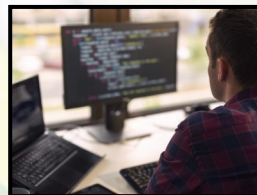
  

Customer	Quantity	Collection Date
Europe Foods Distribution...	10	12/03/2020
Dunnes Stores H.O.	53	12/03/2020
SUPERVALUCENTRA (E)	8	12/03/2020
Cork Airport	2	13/03/2020
SUPERVALUCENTRA (E)	40	13/03/2020
SUPERVALUCENTRA (E)	39	13/03/2020

### PROCESSING YIELD

The processor has an opportunity to grade their growers based on the processed yield of the product. This can also provide feedback if a particular grower has a specific problem with their harvest.

## IN HOUSE TEAM



GlobeWeigh have a team of both in house software developer's and hardware engineer's. Our team is lead by a team with a combined experience of over 100 years in software and hardware giving you confidence that we will deliver a turn key package tailored to your requirements. Based in both Mullavilly, Co. Armagh and Farmer's Cross, Cork we have engineers strategically placed across the country to provide with software support supported via online portals.

## PRODUCTION PLANNING

Based on the sales orders and stock a production plan can be generated to ensure all ongoing orders have sufficient stock to fulfil. Based on the production yield a bill of materials can also be generated to ensure that enough ingredient stock is used to provide sufficient finished goods output. The production plan module can group similar based products to provide as much efficiency for production. A production plan can prioritise the sequence of batch production as well as assigning it to specific lines.



# PRODUCTION PLANNING AND STOCK MANAGEMENT

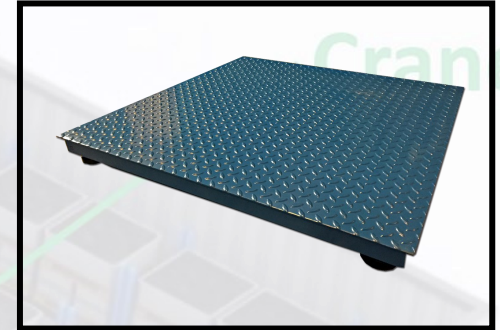
## HARDWARE



Weighbridge



Platform & Bench Scale's



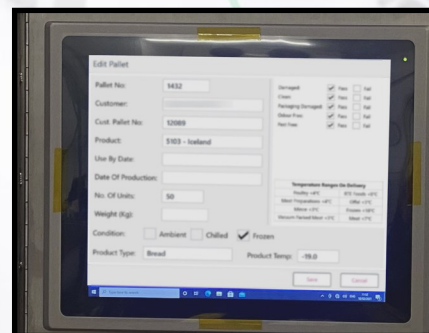
Intelligent Scanners



Barcode Label Printers



Industrial Touchscreen PC



Industrial Tablets



## STOCK MANAGEMENT

### INGREDIENT STOCK

Based on sales orders and the production planning a bill of materials for ingredient requirement can be generated. This can be compared with stock levels to determine if a re-order level is reached. Stock can be consumed against a production plan or by being booked into production by a scanner.

### FINISHED GOODS STOCK

All labelled product can be put away to finished goods store. Stock can be managed by simple inputs via production and reduced by sales order at dispatch.

We can provide stock take for both ingredient and finished goods via a scanner.

# OUR SERVICES

## Comprehensive service and support – when and where you need it!

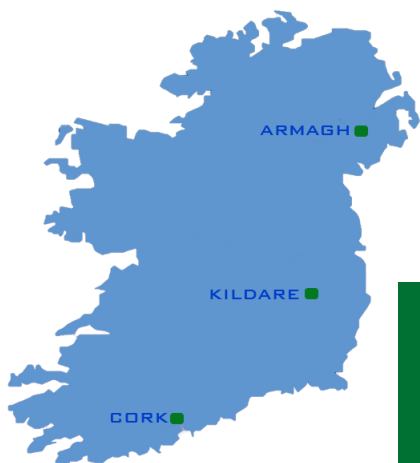
Globeweigh offers a comprehensive service, calibration and support capability for a wide range of industrial weighing equipment throughout Ireland. We support both our own and other manufacturers' weighing equipment, and packages can be tailored to meet your specific operational and fiscal requirements.

Service is available from our centres in Armagh, Kildare and Cork, with 24 hour cover also available for companies operating around the clock and at weekends.

## KEEPING YOUR CRITICAL WEIGHING EQUIPMENT IN TIP-TOP CONDITION

We appreciate and understand the importance of a well defined and implemented service and maintenance program. Your equipment and installation have their own specific requirements and will only perform as well as the maintenance program you have in place. Our support packages are designed to suit your exact needs, giving you time to focus on the efficient running of your business, without having to worry about breakdowns.

Service visits are arranged to suit your company's working pattern and we can fit in with scheduled shutdowns or plan visits during evenings and week-ends. If your equipment is used more extensively at certain times of the year due to seasonal influences, we will assess this and provide a plan that is just right for your business.



- Coverage for all public and bank holidays
- Coverage for week-ends
- Priority four hour response time
- 24 hour telephone support

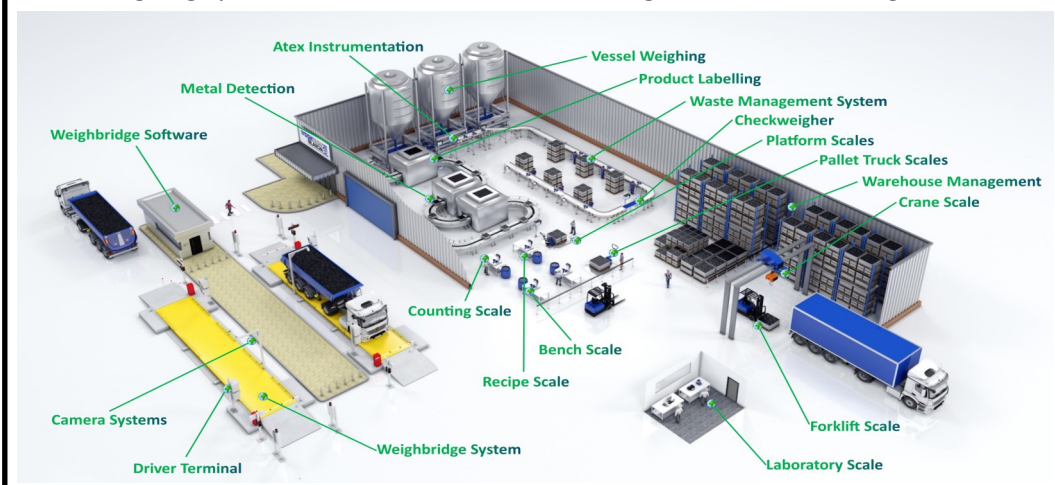
**24/7  
SERVICE**

## TOTAL SOLUTIONS

### FROM WEIGH PRICE LABELLERS TO WEIGHBRIDGES TO BENCH SCALES

Globeweigh's skilled engineers are trained to support a diverse range of weighing equipment from laboratory balances through to weighbridges. Our core philosophy is based on identifying and remedying any potential problems ahead of time, thereby optimising your equipment 'uptime'. Contact us to find out more about service and support programs for automatic and non-automatic weighing equipment and instrumentation including:

Weighbridges, Bench scales, Floor scales, Counting scales, Weigh price labellers, Pallet truck scales, Forklift truck scales, Crane scales, Laboratory scales, Hopper scales, Tank & silo weighing systems, Mechanical scales, Axle weighers and Check weighers.



**ISO 9001:2015 Quality**



**ISO 45001:2018 Health & Safety**



**ISO 14001:2015 Environmental**



**NSAI Authorised Verifiers**



**Directive 2014/31/32**

We are certified for the self verification (SV) of NAWI's (non-automatic weighing instruments) and MID (automatic weighing instruments)

**WWW.GLOBEWEIGH.COM**

Armagh: 028 38840714  
Cork: 021 4318388

[sales@globeweigh.com](mailto:sales@globeweigh.com)