



innovative solutions...  
exceptional service

# AVERAGE WEIGHT

# SYSTEM

## KEY FEATURES:

- Multi Station Sampling
- Average Weight Statistics
- Quality Attribute Data
- Multi Device Connectivity
- Industry Specific Solutions



**Armagh Office:**  
118 Portadown Road, Mullavilly,  
Co. Armagh BT62 2JX  
Call: 028 38840714

**Cork Office:**  
Unit 3, Airport East Business & Technology Park,  
Farmer's Cross, Cork  
Call: 021 4318388

# AVERAGE WEIGHT AND QUALITY ATTRIBUTE SYSTEM

## SOFTWARE

Time	Mean	SD	T1/T2

Total: 0 Mean ml: 0.00 SD: 0.00 %T1/T2: 0

Save Pause

V2.31.0.0 14 May 11:29

## AVERAGE WEIGHT

Our Average Weight System is PC based with a SQL database for all batch records. The product file is setup as PLU's and can have the following fields:

- Product code / number
- Product description
- Nominal weight
- Tare of container/Packaging

All product data is password protected to avoid unauthorized specification changes.

Sampling is completely configurable and can be determined by frequency and number of samples – for example a schedule to sample 5 pieces every 30minutes can be set up with all the records stored against the batch. A batch number will be auto generated or it can be entered manually.

Sample 2 - Ready To Start 5 Items Required

Sample Quality Items: Click an Item to Edit

Brix: 10.45 CO2: 0.00

Torque: 11.000

Acidity: 0.17

Sampling

## QUALITY ATTRIBUTE DATA

Our system allows for a number of external devices to be connected via RS232 to enable us to capture a number of quality attributes which can be industry specific. This ensures that each of the tests are logged against a batch number for full compliance.

Our system can connect to

- Scanners (For product identity)
- Torque Meter
- Refractometer
- Co2 Meter
- Alcohol Meter
- Colour/haze detector
- Other testing devices with RS232



## REPORTING

All test data will be stored against a specific batch number. This ensures that for audits or general queries it is easy to retrieve the specific data. The data can be provided in various report formats either manually or automatically - e.g. a non compliance could immediately generate an email to a technical manager.

On completion of a batch the operator can see a summary to advise of compliance and completion of the checks required.

For legal compliance a report will be generated and stored for all the average weight statistics required under the 3packer's rules.



# FOR OFF LINE MONITORING OF PRODUCT COMPLIANCE

## HARDWARE



### TOUCHSCREEN SYSTEM

Our hardware has been tried and tested for over 20 years with our units being manufactured using the latest touchscreen technology and high quality stainless steel housings and scales.

Our system has been designed with a clear and concise user interface to enable simple operation. The screen displays each set of weight samples as they are being tested. Any attribute results are also clearly displayed on the screen. This also ensures that the operator is immediately aware of any non compliance or omission of a required test.

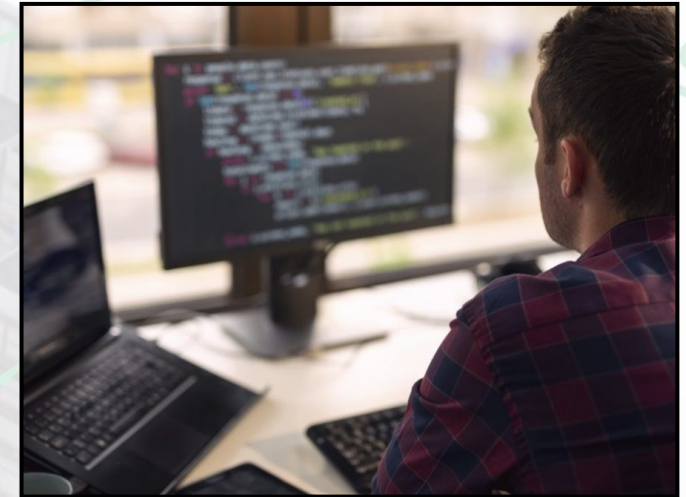


### WEIGHING

GlobeWeigh partner with Europe's leading scale manufacturers to ensure high quality scales are used for our projects. Accuracy is required to ensure correct weighing along with the scales being robust and suitable for the environment they are installed in.

The instrumentation that we use is manufactured in Germany by Bizerba. This unit is trade approved and is IP69K ingress protected.

Globeweigh provide annual calibrations and trade approved verifications to ensure the device is compliant for average weight application.



### SERVICE AND SUPPORT

GlobeWeigh have a team of both in house software developer's and hardware engineer's. Our team is lead by a team with a combined experience of over 100 years in software and hardware giving you confidence that we will deliver a turn key package tailored to your requirements.

Based in both Mullavilly, Co. Armagh and Farmer's Cross, Cork we have engineers strategically placed across the country to provide with software support supported via online portals.

# OUR SERVICES

## Comprehensive service and support – when and where you need it!

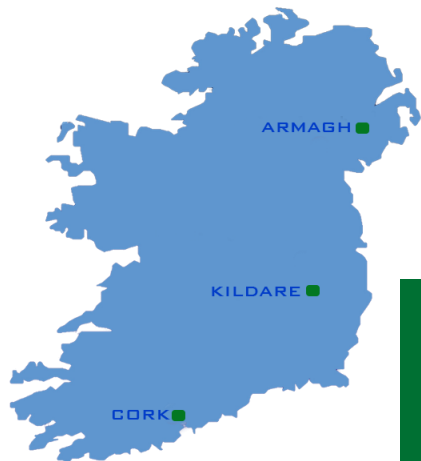
Globeweigh offers a comprehensive service, calibration and support capability for a wide range of industrial weighing equipment throughout Ireland. We support both our own and other manufacturers' weighing equipment, and packages can be tailored to meet your specific operational and fiscal requirements.

Service is available from our centres in Armagh, Kildare and Cork, with 24 hour cover also available for companies operating around the clock and at weekends.

## KEEPING YOUR CRITICAL WEIGHING EQUIPMENT IN TIP-TOP CONDITION

We appreciate and understand the importance of a well defined and implemented service and maintenance program. Your equipment and installation have their own specific requirements and will only perform as well as the maintenance program you have in place. Our support packages are designed to suit your exact needs, giving you time to focus on the efficient running of your business, without having to worry about breakdowns.

Service visits are arranged to suit your company's working pattern and we can fit in with scheduled shutdowns or plan visits during evenings and week-ends. If your equipment is used more extensively at certain times of the year due to seasonal influences, we will assess this and provide a plan that is just right for your business.



- Coverage for all public and bank holidays
- Coverage for week-ends
- Priority four hour response time
- 24 hour telephone support

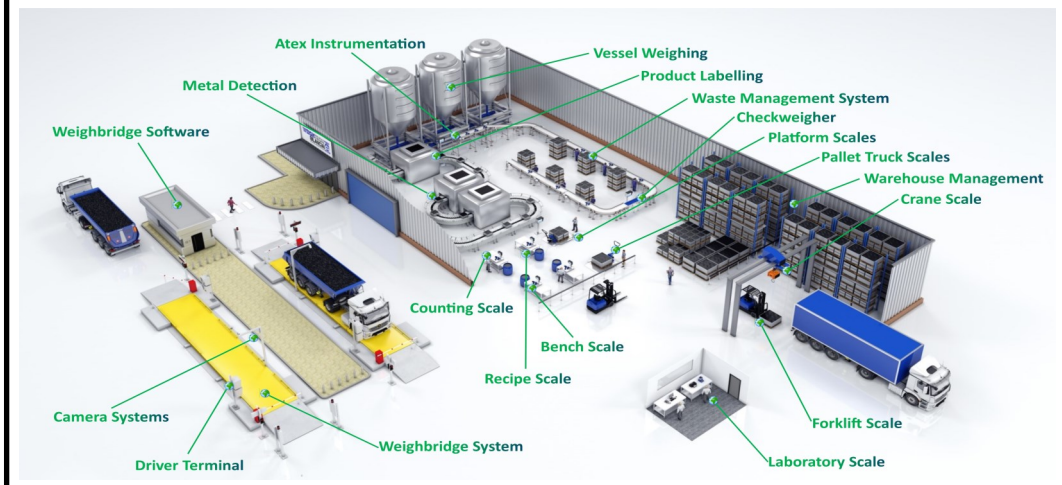
**24/7  
SERVICE**

## TOTAL SOLUTIONS

### FROM WEIGH PRICE LABELLERS TO WEIGHBRIDGES TO BENCH SCALES

Globeweigh's skilled engineers are trained to support a diverse range of weighing equipment from laboratory balances through to weighbridges. Our core philosophy is based on identifying and remedying any potential problems ahead of time, thereby optimising your equipment 'uptime'. Contact us to find out more about service and support programs for automatic and non-automatic weighing equipment and instrumentation including:

Weighbridges, Bench scales, Floor scales, Counting scales, Weigh price labellers, Pallet truck scales, Forklift truck scales, Crane scales, Laboratory scales, Hopper scales, Tank & silo weighing systems, Mechanical scales, Axle weighers and Check weighers.



**ISO 9001:2015 Quality**



**ISO 45001:2018 Health & Safety**



**ISO 14001:2015 Environmental**



**NSAI Authorised Verifiers**



**Directive 2014/31/32**

We are certified for the self verification (SV) of NAWI's (non-automatic weighing instruments) and MID (automatic weighing instruments)

**WWW.GLOBEWEIGH.COM**

Armagh: 028 38840714  
Cork: 021 4318388

[sales@globeweigh.com](mailto:sales@globeweigh.com)