

PTE - V Model

Optional accessories

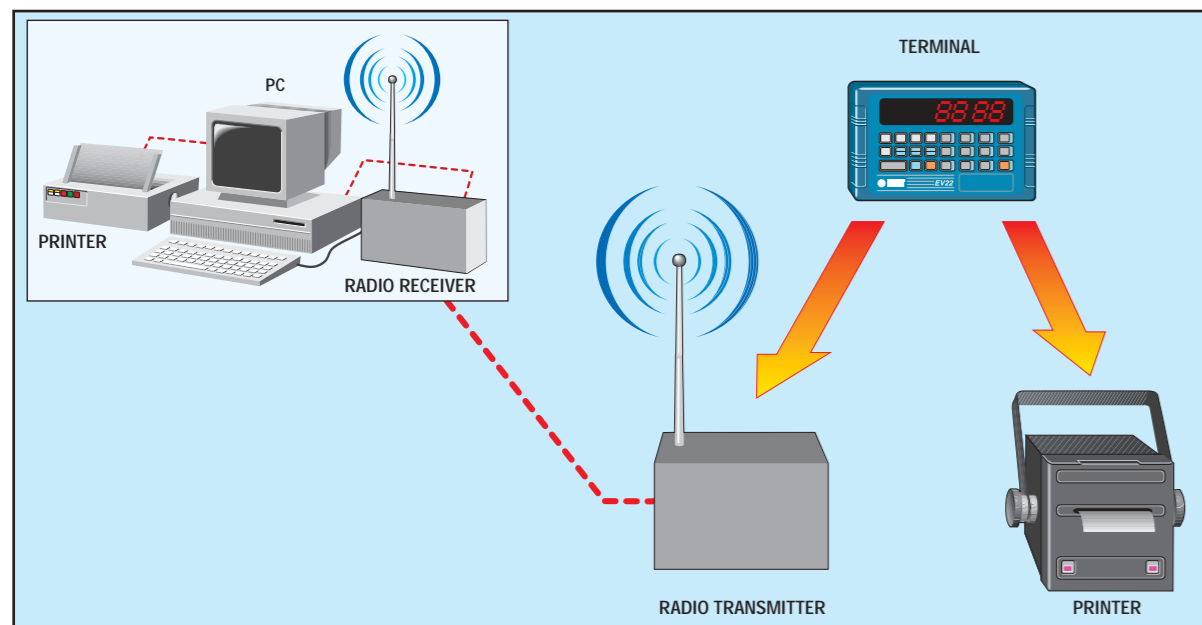
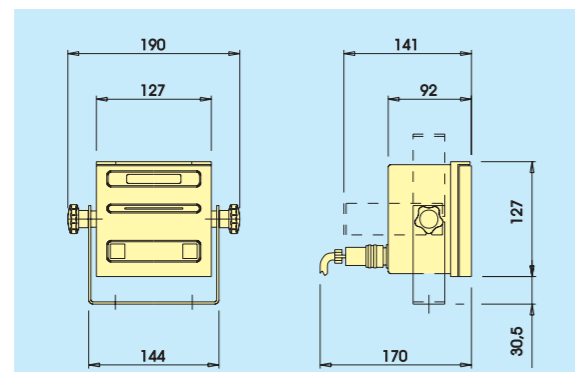
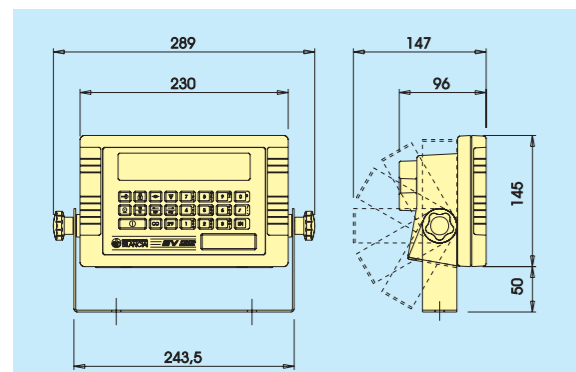
- On-board thermal printer
- Radio link for data download to a remote computer or terminal
- "MPP" - Permanent weights memory (can also be used in conjunction with radio connection for printing of documents for external use using the company computer system).



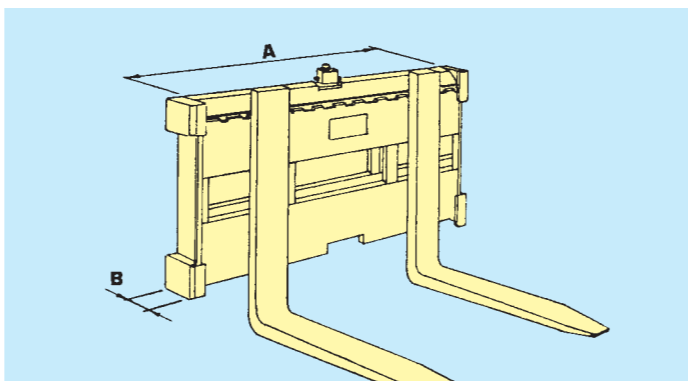
Terminal EV 22



Thermal printer



PTE - V



Version for internal use without electronic inclination control						
Model	For trucks with load capacities of (kg)	Divisions (kg)	FEM fork type	Width of fork carriage plate A (mm)	PTE thickness B (mm)	Weight (kg)
PTE-V 152/90	500/1500	1/2	2	900	113	207
PTE-V 152/110	500/1500	1/2	2	1100	113	247
PTE-V 252/90	1000/2500	2/5	2	900	113	207
PTE-V 252/110	1000/2500	2/5	2	1100	113	247
PTE-V 253/110	1000/2500	2/5	3	1100	136	350
PTE-V 403/110	2500/4000	5/10	3	1100	136	350

Version for internal use with electronic inclination control						
Model	For trucks with load capacities of (kg)	Divisions (kg)	FEM fork type	Width of fork carriage plate A (mm)	PTE thickness B (mm)	Weight (kg)
PTE-V 152/90	1500	1	2	900	113	207
PTE-V 152/110	1500	1	2	1100	113	247
PTE-V 252/90	1500/2500	1/2	2	900	113	207
PTE-V 252/110	1500/2500	1/2	2	1100	113	247
PTE-V 253/110	1500/2500	1/2	3	1100	136	350
PTE-V 403/110	2500/4000	2/5	3	1100	136	350

Approved version (class III) with electronic inclination control						
Model	For trucks with load capacities of (kg)	Divisions (kg)	FEM fork type	Width of fork carriage plate A (mm)	PTE thickness B (mm)	Weight (kg)
PTE-V 152/90	1000/1500	1/2	2	900	113	207
PTE-V 152/110	1000/1500	1/2	2	1100	113	247
PTE-V 252/90	2000/2500	2/5	2	900	113	207
PTE-V 252/110	2000/2500	2/5	2	1100	113	247
PTE-V 353/110	2000/3500	2/5	3	1100	136	350
PTE-V 403/110	2000/4000	2/5	3	1100	136	350

Weighing systems for fork lift trucks



PTE - V model

SOCIETA' COOPERATIVA
BILANCIAI
Weighing Instruments and Technologies

Società Cooperativa Bilanciai Campogalliano a.r.l.
41011 Campogalliano (MO) Italy - Via S. Ferrari, 16
Tel. +39.059.893.611 r.a. - Fax +39.059.527.079
Internet: www.coopbilanciai.it - e-mail: cb@bilanciai.it

N. 811936 - 0360 - metadato

SOCIETA' COOPERATIVA
BILANCIAI

PTE - V Model

General characteristics

Electronic weighing system suitable for installation on all fork lift trucks with carriage plates built to FEM standards.

Compact and sturdy, constructed in compliance with directives. A CE approved version of the instrument is also available in compliance with directive 89/392/CEE.

The residual load capacity of the lift truck after installation of the weighing system will vary according to the specifications of the individual truck.

The weight is displayed on an on-board electronic terminal which is connected to the truck's power supply. Models are also available for use with trucks equipped with tipping attachments, fork spreaders, transfer units and pallet off-loaders.

To enhance precision performance, the system is also available with an electronic system for control of inclination with respect to the weighing plate (max. inclination 10%).

A CE approved version of the instrument is also available in compliance with directive 90/384/EEC.



PTE - V Model

Technical specifications

The weight is displayed to the operator on a terminal mounted on board the truck.

The terminal provides functions for entering, programming and storing alphanumeric descriptions and can display the following information:

- date and time
- 4-digit product/customer code which can be associated with a 16 character alphanumeric description stored in memory.
- 6-digit generic code
- progressive number
- gross weight
- tare (auto-weighed tare, pre-set tare, coded notes tare)
- net weight
- totals per product/customer code
- totals per generic code
- sum total and final totals



PTE - V Model

The PTE provides the following special functions:

- **multiple tare:** with this function the operator can enter the weight of an empty pallet, the weight of an empty box/crate and the number of boxes/crates present on the pallet in order to calculate the total tare value. This can then be programmed as the pre-set tare value.
- **piece counter:** the system can store hundreds of coded average weight values and thereby calculate the number of pieces on the pallet.
- **sum weight:** the operator can load a pallet in a number of consecutive stages and display and/or print the weight for each stage by zeroing the display after each weigh.

- 12-48 Vdc power supply
- Power consumption 10 VA
- Power consumption with printer 20 VA
- Back-lit LCD display with character height 18 mm
- EIARS 232 serial port



Detail showing the side cover protecting the flexures and the load cells.



Connection of the terminal to the truck scale via coiled cable; recommended for masts with one/two extensions.



Connection of terminal to the truck scale with pulley system; recommended for two/three mast extensions.