
Cold Store & Warehouse Management System

**Optimising your Operation
from Goods in to Despatch**



from

Ireland's Leading System Provider

GlobeWeigh 





Complete Control

GlobeWeigh have developed a complete data management control system specifically for the cold storage and warehouse management sector.

This system provides full traceability from the point of intake through the storage period to the date of dispatch. The system is completely modular to allow phased implementation at a pace and cost that suits the customer.

Intake

All products taken into the cold store can be uniquely identified by product type, customer, quantity, date of intake etc.

This is encrypted into a barcode for scanning from location to location or dispatching and will be logged against a store location number.

If your customers' product is pre labeled with a compatible system then it can be scanned into your database without any manual entry.



Stock Control – Stock Takes

The key to maintaining good stock control is to keep it simple.

Print a label for a product – its now in stock. Assemble a load, scan the product barcodes, print a delivery docket – its already been removed from stock. Our stock system is very sophisticated but very easy to use. It caters for intake, production, rework, breaking and rebuilding of pallets, multi-step and value added processes.

View stock levels in multiple warehouses (both on- and off-site). Analyse by Product, Product Groups, Batch, Production Date, Use By / Best Before Date, Pallet Number, Warehouse, Storage Location.

Even drill-down to individual items to see quantity, weight, tares, and production date & time. All stock movements are recorded to build a full audit trail for every stock item.



WHouse Rack Column Level
CS1 A001A



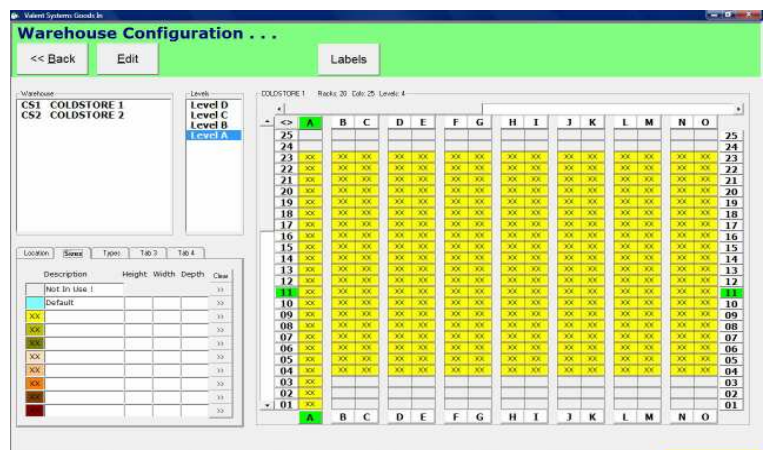
741 CS1 A001A 4

Traceability

Our system exceeds the requirements of all traceability legislation.

Traceability can be provided to customers and / or suppliers electronically.

Traceability can be viewed both forwards or backwards - intake and Despatch.



Web Viewing / Ordering



This module allows your client to view their stock on your site detailed by product code, date of intake, quantity, use by dates etc.

This benefits your customers for production planning, stock rotation, account reconciliation and item picking for despatch etc.

This is password protected for each client to ensure total confidentiality and security.

Supplier	Code	Description	Pallets	Boxes
FLETCHER FLETCHER INTERNA	MLM0095	Lamb Leg CKT - X Grade - VP	2	90
		Sub-Total: FLETCHER FLETCHER IN...	2	90
HORIZON HORIZON MEATS NE	MLM0125	Lamb Rolled Shortloin - 0 nb -	1	33
		Sub-Total: HORIZON HORIZON MEAT...	1	33
NEWZEAL NEW ZEALAND FAR...	MLM0095	Lamb Leg CKT - X Grade - VP	1	1
		Sub-Total: NEWZEAL NEW ZEALAND...	1	1
		Total:	4	124

Despatch

Select an order – assemble the load – scan the product barcodes. Even let the system automatically generate a delivery docket, invoice, CMR, or Traceability Certificate.

Set 'rules' to highlight mixed pallets, mixed batches, short dated stock, incorrectly filled orders, etc.

Set the system to highlight where older stock should be despatched instead.



Other Benefits:

- Monthly reports by customer for stock movement, despatch, intake, stock etc.
- Links to accounts packages i.e. sage
- Impress your customers with up-to-date data management system for their use

Warehouse Stock Levels . . .									
Storage Locations									
COLDSTORE 2									
Rack A	Rack B	Rack C	Rack D	Rack E	Rack F	Rack G			
4 Levels 10 Columns	4 Levels 10 Columns	4 Levels 10 Columns	4 Levels 10 Columns	4 Levels 10 Columns	4 Levels 10 Columns	4 Levels 10 Columns	4 Levels 10 Columns		
E	A001D	A002D	A003D	A004D	A005D	A006D	A007D	A008D	E
D									D
C	A001C Mixed 3 Pallets MIXED ITEMS 123 2,634.0	A002C	A003C	A004C	A005C	A006C	A007C	A008C	C
B									B
A	A001A	A002A	A003A	A004A	A005A	A006A	A007A	A008A	A
	<< 001	002	003	004	005	006	007	008	>>